



Gab 2 (phospho Tyr643) Polyclonal Antibody

Catalog No	YP-Ab-03579
Isotype	IgG
Reactivity	Human;Mouse;Rat
Applications	WB;IHC;IF;ELISA
Gene Name	GAB2
Protein Name	GRB2-associated-binding protein 2
Immunogen	The antiserum was produced against synthesized peptide derived from human Gab2 around the phosphorylation site of Tyr643. AA range:609-658
Specificity	Phospho-Gab 2 (Y643) Polyclonal Antibody detects endogenous levels of Gab 2 protein only when phosphorylated at Y643.
Formulation	Liquid in PBS containing 50% glycerol, 0.5% BSA and 0.02% sodium azide.
Source	Polyclonal, Rabbit,IgG
Purification	The antibody was affinity-purified from rabbit antiserum by affinity-chromatography using epitope-specific immunogen.
Dilution	WB: 1/500 - 1/2000. IHC: 1/100 - 1/300. ELISA: 1/40000.. IF 1:50-200
Concentration	1 mg/ml
Purity	≥90%
Storage Stability	-20°C/1 year
Synonyms	GAB2; KIAA0571; GRB2-associated-binding protein 2; GRB2-associated binder 2; Growth factor receptor bound protein 2-associated protein 2; pp100
Observed Band	74kD
Cell Pathway	Cytoplasm . Cell membrane .
Tissue Specificity	Brain,Clones donated by Kazusa DNA Research Inst.,
Function	PTM:Dephosphorylated by PTPN11.,PTM:Phosphorylated on tyrosine residue(s) by the thrombopoietin receptor (TPOR), stem cell factor receptor (SCFR), and T-cell and B-cell antigen receptors, gp130, IL-2R and IL-3R.,similarity:Belongs to the GAB family.,similarity:Contains 1 PH domain.,subunit:Interacts with GRB2, PI-3 kinase and with other SH2-containing proteins.,
Background	GRB2 associated binding protein 2(GAB2) Homo sapiens This gene is a member of the GRB2-associated binding protein (GAB) gene family. These proteins contain pleckstrin homology (PH) domain, and bind SHP2 tyrosine phosphatase and GRB2 adapter protein. They act as adapters for transmitting various signals in response to stimuli through cytokine and growth factor receptors, and T- and B-cell antigen receptors. The protein encoded by this gene is the principal activator of phosphatidylinositol-3 kinase in response to activation of the high affinity IgE receptor. Two alternatively spliced transcripts encoding



different isoforms have been described for this gene. [provided by RefSeq, Nov 2009],

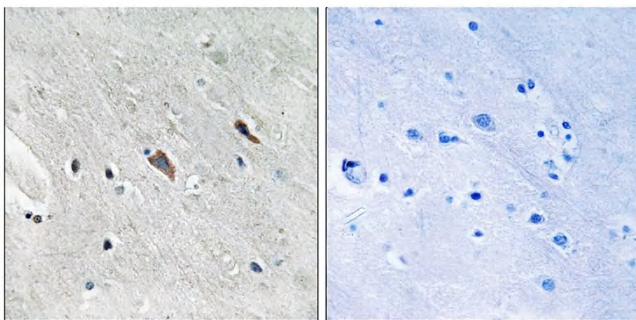
matters needing attention

Avoid repeated freezing and thawing!

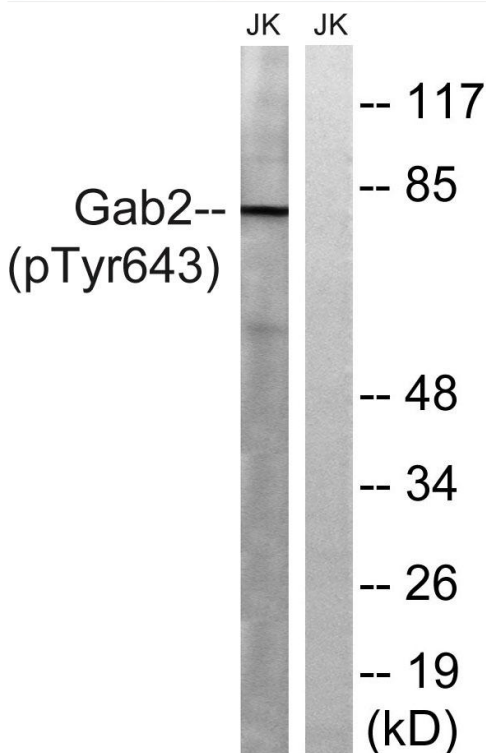
Usage suggestions

This product can be used in immunological reaction related experiments. For more information, please consult technical personnel.

Products Images



Immunohistochemistry analysis of paraffin-embedded human brain, using Gab2 (Phospho-Tyr643) Antibody. The picture on the right is blocked with the phospho peptide.



Western blot analysis of lysates from Jurkat cells treated with IFN 2500U/ML 30', using Gab2 (Phospho-Tyr643) Antibody. The lane on the right is blocked with the phospho peptide.